



EVACUATION FOR YOU AND YOUR PETS

KNOW WHEN AND WHERE TO GO

- 💡 Determine if **your residence is in an evacuation ZIP-Zone**. The Zip-Zones are: Coastal, A, B, C.
- 💡 If you live outside an evacuation Zip-Zone, you should think about **whether your residence can withstand a severe storm**. If you believe that your residence is not strong enough to withstand a storm, you should plan to move to a stronger structure nearby.
- 💡 **Pre-identify a safe location** with friends, or an emergency shelter where you can stay.

TO ACCESS OUR REGIONAL EVACUATION ROUTE MAPS:

Visit your local Office of Emergency management Website or request a printed guide.

Also, you can visit: <https://www.h-gac.com/hurricane>

IF YOU DO NOT HAVE A CAR: Plan how you will leave if needed.

- If you are **EVACUATING THROUGH A COMMUNITY EVACUATION HUB**, consider leaving your electric chair home, and **use a lightweight manual wheelchair** to facilitate your bus transportation. **If you have pets, have a pet carrier and a kit ready for each pet.**
- **VOLUNTARY REGISTRY** State of Texas Emergency Assistance Registry <https://stear.texas.gov/>



IF YOU HAVE A CAR

- **Consider car safety a priority**
- Stay aware of weather conditions, road hazards and drive carefully.

Hurricane season: June 1st to November 30th

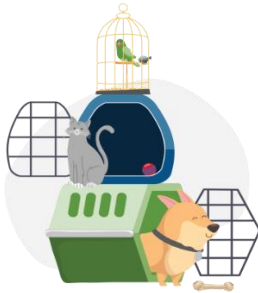
BEFORE EVACUATION	DURING EVACUATION
<p>Car emergency kit:</p> <ul style="list-style-type: none">• Jumper cables, tire repair supplies• Reflective triangle• Car cell phone charger• Blanket, Water, snacks, sanitizing wipes• First aid kit, radio for emergency alerts• Have a mechanic check your car to ensure it is ready for safe travel.• Keep your gas tank full• Ensure your tires have enough tread• Wear sturdy shoes and clothing• Secure your home: close doors & windows• Unplug TVs, radios, small appliances• If instructed by authorities shut off utilities	<ul style="list-style-type: none">• Check if your neighbors need a ride• Follow the local official notifications and emergency alerts. WEAs and IPAWs• Share your plans with your support system• Do not drive through flooded areas. Six inches of water can cause a vehicle to lose control or possibly stall.• A foot of water will float many cars. Floodwater may weaken roads or bridges.• If a power line falls on your car you are at risk of electrical shock. Stay inside until a trained person removes the wire.• If it becomes hard to control the car, pull over, stop the car and set the parking brake.



EVACUATION FOR YOU AND YOUR PETS

PREPARE YOUR PETS FOR TRAVEL

Your pets are an important member of your family, they need to be included in your family's emergency and evacuation plans. Train your pet now to be comfortable getting inside its carrier, so during an evacuation it will be a familiar activity. Follow these tips to reduce their stress:



- **Leave the carrier open**
- **Feed it treats near the carrier – you can even try putting a few treats inside the carrier**
- **Add a favorite blanket inside the carrier so it smells familiar**
- **Know where your pets hide, so you can easily find them in case you have to leave your house quickly**
- **PET KIT READY:** carrier, leash, toy, vaccination record, photo microchip information, food, bowl, poop baggies, medication.

PETS EVACUATING THROUGH A COMMUNITY EVACUATION HUB:

- HUB Coordinators have final say over all pet transports. Generally, pets will be transported with the owner.
- However, if a situation dictates, they may be transported in a separate vehicle.

SERVICE ANIMALS

- According to Title II and III of the ADA, a service animal is **any dog (or miniature horses)** - that is individually trained to do work or perform tasks for an individual with a disability.
- **Service animals are allowed to be with the person with a disability.**

PETS AND EMOTIONAL SUPPORT ANIMALS

- Emotional Support Animals (ESAs) are not protected under the Americans with Disabilities Act (ADA). However, many shelters will try to accommodate ESAs whenever possible—it's best to check with the shelter ahead of time to confirm their policy.

EXOTIC ANIMALS

- Must be secure in their appropriate carriers before transporting.

FARM AND BARN ANIMALS

If you have **horses, goats, pigs, cows** on your property, be sure to prepare before a disaster.

- Ensure all animals have some form of identification.
- Evacuate animals earlier, whenever possible. Map out routes in advance.
- Arrange vehicles, handlers and drivers for transporting/supporting each animal.
- Ensure destinations have food, water, veterinary care and handling equipment.
- If evacuation is not possible, decide if you should turn them loose outside.

NEVER LEAVE AN ANIMAL TIED UP OUTSIDE IF YOU ARE EVACUATING!

For more preparedness tips visit:

<https://www.avma.org/resources-tools/pet-owners/emergency-care/pets-and-disasters>;

<https://www.cdc.gov/healthy-pets/emergency-preparedness/index.html> and

<https://www.ready.gov/animals> or www.ready.gov/pets